

**SCHOOL ENROLLMENT  
ANNUAL VARIANCES**

SCHOOL	2000-01 ENROLL	2001-02 ENROLL	% VAR	2002-03 ENROLL	% VAR	2003-04 ENROLL	% VAR	2004-05 ENROLL	% VAR	2005-06 ENROLL	% VAR	2006-07 PROJ	% VAR	Avg % VAR
AES	--	--	--	--	--	--	--	--	--	1441	--	1001	(-43.9)	--
CEB	869	815	-6.60	768	-6.10	830	8.00	805	-3.10	708	-13.70	718	1.40	-4.30
CHE	540	534	-1.10	549	2.70	563	2.50	513	-9.70	529	3.10	518	-2.10	-0.50
DIS	856	880	2.80	946	7.50	964	1.90	919	-4.80	982	6.80	992	1.00	2.84
FIE	981	1080	10.00	1206	11.60	1159	-4.00	1155	(-0.3)	1138	-1.40	1135	-0.20	4.05
GPE	752	793	5.40	765	-3.60	798	4.30	786	-1.50	701	-12.10	687	-2.00	-1.50
KHE	775	791	2.00	808	2.10	827	2.30	823	-0.40	831	0.90	822	-1.00	1.38
LAE	1105	826	(-33.7)	901	9.00	994	10.30	1082	8.80	1254	15.80	1193	-5.10	10.98
LES	648	645	-0.40	638	-1.00	638	0.00	636	-0.30	618	-2.90	597	-3.50	-0.92
MRE	572	574	0.30	561	-2.30	542	-3.50	578	6.60	592	2.40	571	-3.60	0.70
MBE	612	762	24.50	763	0.10	752	-1.40	775	3.00	727	-6.60	684	-6.20	3.92
MCE	580	579	-0.10	517	-11.90	519	0.30	542	4.40	548	1.10	533	-2.80	-1.24
OPE	548	569	3.80	592	4.00	585	-1.10	553	-5.70	558	0.90	552	-1.00	0.38
PES	988	989	0.10	1059	7.00	1105	4.30	1126	1.90	1108	-1.60	1124	1.40	2.34
ROE	--	757	--	798	5.40	936	17.20	974	4.00	1052	8.00	1055	0.20	8.65
RVE	833	760	-9.60	768	1.00	794	3.30	762	-4.10	785	3.00	749	-4.80	-1.88
SBJ	680	662	-2.70	664	0.30	667	0.40	674	1.00	616	-9.40	625	1.40	-1.00
SPC	--	--	--	--	--	--	--	610	--	721	18.10	696	3.50	18.10
TBE	805	875	8.60	987	12.80	1163	17.80	888	(-30.9)	1043	17.40	1165	11.60	14.15
TES	949	675	(-40.5)	666	-1.30	903	35.50	1227	35.80	905	(-35.5)	854	(-5.9)	23.33
WEC	1018	1000	-1.80	1044	4.40	1088	1.30	1051	-0.60	540	(-94.6)	568	5.10	0.83
WES	1114	979	-13.70	1010	3.10	1006	-0.30	949	-6.00	885	-7.20	914	3.20	-4.82
GCJH	934	997	6.70	992	-0.50	924	-7.30	966	4.50	880	(-9.7)	869	-1.20	0.85
LAJH	--	--	--	--	--	--	--	--	--	1066	--	1053	(-1.2)	--
LJH	1212	1286	6.10	1341	4.20	1364	1.70	1378	1.00	947	(-45.5)	966	2.00	3.25
OPJH	1149	1118	-2.70	1158	3.50	1226	5.80	1278	4.20	1385	8.30	949	(-45.9)	3.82
WJH	990	1022	3.20	987	-3.50	1133	14.70	1219	7.50	842	(-44.7)	841	-0.10	5.48
BLC	203	211	3.90	167	-26.30	204	22.10	202	-0.90	192	-5.20	190	-1.00	-1.28
KH JR/SR	1135	1182	4.10	1212	2.50	1273	5.00	1292	1.40	1371	6.10	1421	3.60	2.18
OLS K-8	--	--	--	--	--	--	--	--	--	--	--	1212	--	--
CHS	1635	1788	9.30	2027	13.30	1280	(-58.3)	1047	(-22.2)	1065	1.70	1203	12.90	8.10
FIHS	--	--	--	--	--	1338	--	1778	32.80	2043	14.90	2400	15.70	23.85
MHS	1522	1501	-1.30	1522	1.30	1522	0.00	1576	3.50	1754	11.20	2200	25.40	2.94
OPHS	2207	2225	0.80	2295	3.10	2218	-3.40	2307	4.00	2425	5.10	2680	10.50	1.92
RHS	1712	1815	6.00	1884	3.80	1741	(-8.2)	1665	(-4.5)	1671	-0.30	1783	6.70	3.17

NOTES: 1) ( ) NOT USED DUE TO NEW SCHOOL INFLUENCES.  
2) 2006-07 PROJECTIONS NOT INCLUDED IN AVERAGE % VARIATIONS.  
3) ENROLLMENT BASED FROM 9TH MONTH.

**DISTRICT ENROLLMENT**  
**5 YEAR HISTORIC ACTUALS**

<b>FISCAL YEAR</b>	<b>PK-12 ENROLLMENT (4<sup>TH</sup> MONTH)</b>	<b>% INCREASE OVER PREVIOUS YEAR</b>
2000-2001	27,821	
2001-2002	28,725	3.2%
2002-2003	29,544	2.8%
2003-2004	31,009	5.0%
2004-2005	32,162	3.6%
2005-2006	34,091	6.0%
<b>AVERAGE</b>	1,254	4.1%

**DISTRICT ENROLLMENT  
PROJECTION COMPARISONS**

<b>PLAN YEAR</b>	<b>DOE COFTE 7/31/06</b>	<b>DISTRICT 5-YEAR AVERAGE 4.12%</b>	<b>URBANOMICS</b>	<b>POPULATION PROJECTION FROM COUNTY</b>
2006-07	35,450	35,520	35,381	33,580
2007-08	37,101	36,987	36,644	34,843
2008-09	38,917	38,511	37,907	36,106
2009-10	40,832	40,098	39,170	37,369
2010-11	42,786	41,750	40,433	38,632
<b>5 YEAR INCREASE</b>	7,336	6,226	5,052	5,052

Clay County Population (2005) - 165,984  
 Population Growth Per Year - 6,485  
 Student Generation Per Population - .1947  
 District Official 2006/07 Projection - 35,520

## Clay District 2006 Capital Outlay FTE Forecast

Grade	Actual 2002-2003	Actual 2003-2004	Actual 2004-2005	Actual 2005-2006	Projected 2006-2007	Projected 2007-2008	Projected 2008-2009	Projected 2009-2010	Projected 2010-2011
Birth Data for K	1,744	1,811	1,734	1,824	1,888	1,855	2,023	2,121	2,145
PreK	251	266	277	243	252	269	277	286	299
Grade K	2,014	2,265	2,362	2,584	2,686	2,651	2,868	3,014	3,058
Grade 1	2,033	2,178	2,329	2,491	2,737	2,852	2,823	3,040	3,199
Grade 2	1,964	2,204	2,316	2,502	2,679	2,942	3,069	3,042	3,269
Grade 3	2,104	2,227	2,406	2,572	2,756	2,952	3,236	3,387	3,370
Grade 4	2,376	2,198	2,249	2,419	2,633	2,822	3,022	3,312	3,469
Grade 5	2,329	2,522	2,355	2,451	2,578	2,806	3,007	3,221	3,530
Grade 6	2,471	2,508	2,680	2,620	2,674	2,813	3,060	3,280	3,513
Grade 7	2,431	2,614	2,654	2,852	2,770	2,822	2,967	3,224	3,457
Grade 8	2,405	2,538	2,677	2,814	3,004	2,927	2,977	3,127	3,395
Grade 9	2,863	2,769	2,804	3,017	3,125	3,322	3,281	3,322	3,469
Grade 10	2,220	2,447	2,508	2,638	2,784	2,888	3,063	3,046	3,079
Grade 11	1,968	2,192	2,468	2,594	2,728	2,876	2,991	3,164	3,175
Grade 12	1,803	1,704	1,814	1,956	2,044	2,159	2,276	2,367	2,504
PreK-12	29,232	30,632	31,899	33,753	35,450	37,101	38,917	40,832	42,786

### Grade Level Summary

PreK-5	13,071	13,860	14,294	15,262	16,321	17,294	18,302	19,302	20,194
6-8	7,307	7,660	8,011	8,286	8,448	8,562	9,004	9,631	10,365
9-12	8,854	9,112	9,594	10,205	10,681	11,245	11,611	11,899	12,227
PreK-12	29,232	30,632	31,899	33,753	35,450	37,101	38,917	40,832	42,786

### Growth Summary \*

PreK-5	968	1,059	973	1,008	1,008	1,008	1,000	892	734
6-8	275	162	114	442	442	442	288	328	328
9-12	611	476	564	1,816	1,816	1,816	1,915	1,954	1,954
PreK-12	1,854	1,697	1,651	1,816	1,816	1,816	1,915	1,954	1,954

\* Growth for the first year is the difference between the current year and the highest of the three previous years. Subsequent growth is the difference between each year and the prior year. Negative differences are shown as 0.

**ENROLLMENT PROJECTIONS  
DISTRICT SCHOOLS CLAY COUNTY**

SCHOOL	6 YR % VAR	2006-07	% VAR	2007-08	% VAR	2008-09	% VAR	2009-10	% VAR	2010-11
AES	--	1001	6.00	1061	6.00	899	6.00	953	6.00	1010
CEB	-4.30	718	1.40	728	1.40	558	1.40	566	1.40	574
CHE	-0.50	518	0.00	518	0.00	518	0.00	518	0.00	518
CGE	--	--	--	774	2.00	790	2.00	806	2.00	822
DIS	2.84	992	2.84	1020	2.84	1049	2.84	1079	2.84	1110
FIE	4.05	1135	2.00	1158	2.00	1181	2.00	1205	2.00	1229
GPE	-1.50	687	-1.50	677	0.00	677	0.00	677	0.00	677
KHE	1.38	822	1.38	833	1.38	845	1.38	857	1.38	869
LAE	10.98	1193	10.00	1312	10.00	720	8.00	778	8.00	840
LES	-0.92	597	-0.92	591	0.00	591	0.00	591	0.00	591
MRE	0.70	571	0.70	575	0.70	579	0.70	583	0.70	587
MBE	3.92	684	3.92	711	3.92	739	3.92	768	3.92	798
MCE	-1.24	533	-1.24	526	0.00	526	0.00	526	0.00	526
OPE	0.38	552	0.00	552	0.00	552	0.00	552	0.00	552
PES	2.34	1124	2.00	1147	2.00	995	2.00	1015	2.00	1035
ROE	8.65	1055	3.50	433	1.50	440	3.50	455	5.00	478
RVE	-1.88	749	-1.00	741	0.00	741	0.00	741	0.00	741
SBJ	-1.00	625	-1.00	619	0.00	619	0.00	619	0.00	619
SPC	18.10	696	1.00	703	1.00	710	1.00	717	1.00	724
TBE	14.15	1165	10.00	1282	10.00	1084	10.00	1192	10.00	1311
TES	23.33	854	6.00	790	8.00	853	10.00	938	10.00	1032
WEC	0.83	568	0.00	568	0.00	568	0.00	568	0.00	568
WES	-4.82	914	2.00	932	2.00	951	3.00	980	3.00	1009
ELEM "W"	--	--	--	--	--	971	6.00	1029	8.00	1111
ELEM "R"	--	--	--	--	--	681	6.00	722	8.00	780
ELEM "X"	--	--	--	--	--	723	8.00	781	10.00	859
ELEM "Z"	--	--	--	--	--	--	--	897	20.00	1076
GCJH	0.85	869	2.00	886	3.00	913	5.00	959	5.00	1007
LAJH	--	1053	8.50	1138	10.00	1252	15.00	1440	10.00	1584
LJH	3.25	966	2.00	984	2.00	1004	2.00	1024	2.00	1045
OPJH	3.82	949	1.00	958	1.00	968	1.00	978	1.00	988
WJH	5.48	841	3.00	866	3.00	892	5.00	935	5.00	982
OLJH	--	--	--	--	--	--	30.00	900	25.00	1129
JH "PP"	--	--	--	--	--	--	--	--	--	--
BLC	-1.28	190	0.00	190	0.00	190	0.00	190	0.00	190
KH JR/SR	2.18	1421	2.18	1452	2.18	1484	2.18	1516	2.18	1549
OLS K-8	--	1212	35.00	1636	30.00	1382	--	--	--	--
CHS	8.10	1203	3.00	1239	3.00	1276	3.00	1314	4.00	1367
FIHS	23.85	2400	8.00	2592	8.00	2799	6.00	2967	5.00	3115
MHS	2.94	2200	6.00	2332	6.50	2484	6.00	2633	5.00	2382
OPHS	1.92	2680	1.92	2732	1.92	2785	1.92	2839	1.92	2046
RHS	3.17	1783	3.50	1845	4.50	1928	5.00	2024	5.00	2002
HS "QQQ"	--	--	--	--	--	--	--	--	--	1354
TOTAL		35,520		37,101		38,917		40,832		42,786

MJE/prs

8/7/2006 (Enrollment Projections Current)

**PREVIOUSLY APPROVED  
SCHOOL CONCURRENCY  
INTERLOCAL AGREEMENT  
REQUIREMENTS**

1. SCHOOL CONCURRENCY
2. CONCURRENCY SERVICE AREAS –  
SCHOOL ATTENDANCE BOUNDARIES

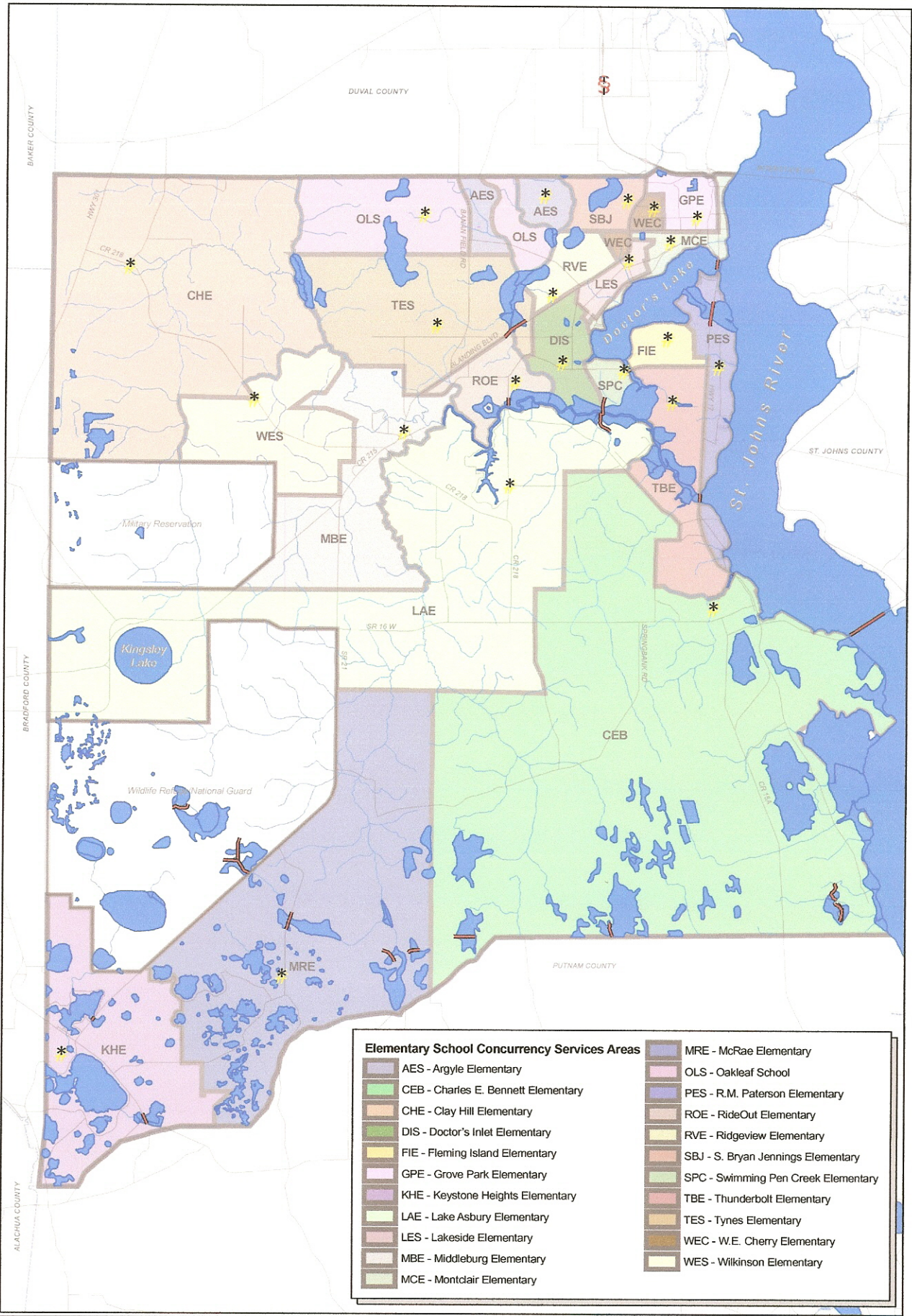
## 1. School Capacity

	Dining Facility	Facility List	Perm SS**	School Capacity*
AES	1352	862	378	<b>862</b>
CEB	804	862	488	<b>804</b>
CHE	770	862	404	<b>770</b>
DIS	735	862	388	<b>735</b>
FIE	1485	862	330	<b>862</b>
GPE	925	862	355	<b>862</b>
KHE	773	862	476	<b>773</b>
LAE	1084	862	414	<b>862</b>
LSE	888	862	412	<b>862</b>
MRE	1485	862	239	<b>862</b>
MBE	671	862	451	<b>671</b>
MCE	781	862	270	<b>781</b>
PES	1336	862	474	<b>862</b>
ROE	1320	862	604	<b>862</b>
RVE	776	862	292	<b>776</b>
SBJ	1086	862	396	<b>862</b>
SPC	1384	862	404	<b>862</b>
TBE	1353	862	739	<b>862</b>
TES	1366	862	494	<b>862</b>
WEC	855	862	415	<b>855</b>
WES	1372	862	298	<b>862</b>
OPE	567	565	258	<b>567</b>
OLS	1568	1005	740	<b>1005</b>
GCSJH	1750	1005	882	<b>1005</b>
LAJH**	1747	1005	1086	<b>1086</b>
LJH	1263	1005	812	<b>1005</b>
OPJH	1262	1005	933	<b>1005</b>
WJH	1108	1005	736	<b>1005</b>
KHHS	2137	1615	907	<b>1615</b>
CHS**	2179	1600	1767	<b>1767</b>
FIH	2485	1600	1344	<b>1600</b>
MHS**	1637	1600	1633	<b>1633</b>
OPH**	2818	1600	2437	<b>2437</b>
RHS	1567	1600	1281	<b>1567</b>

**\*School Capacity Definition:** The number of Student Stations the school can accommodate as determined by the lesser of the design standards of the Dining Facility or the current adopted Facility List.

\*\* Exception: When/if the number of permanent student stations exceed the Facility List the larger will be used





Elementary School Concurrency Services Areas	
	AES - Argyle Elementary
	CEB - Charles E. Bennett Elementary
	CHE - Clay Hill Elementary
	DIS - Doctor's Inlet Elementary
	FIE - Fleming Island Elementary
	GPE - Grove Park Elementary
	KHE - Keystone Heights Elementary
	LAE - Lake Asbury Elementary
	LES - Lakeside Elementary
	MBE - Middleburg Elementary
	MCE - Montclair Elementary
	MRE - McRae Elementary
	OLS - Oakleaf School
	PES - R.M. Paterson Elementary
	ROE - RideOut Elementary
	RVE - Ridgeview Elementary
	SBJ - S. Bryan Jennings Elementary
	SPC - Swimming Pen Creek Elementary
	TBE - Thunderbolt Elementary
	TES - Tynes Elementary
	WEC - W.E. Cherry Elementary
	WES - Wilkinson Elementary

**Kinley-Horn  
and Associates, Inc.**

Elementary School

Major Roads

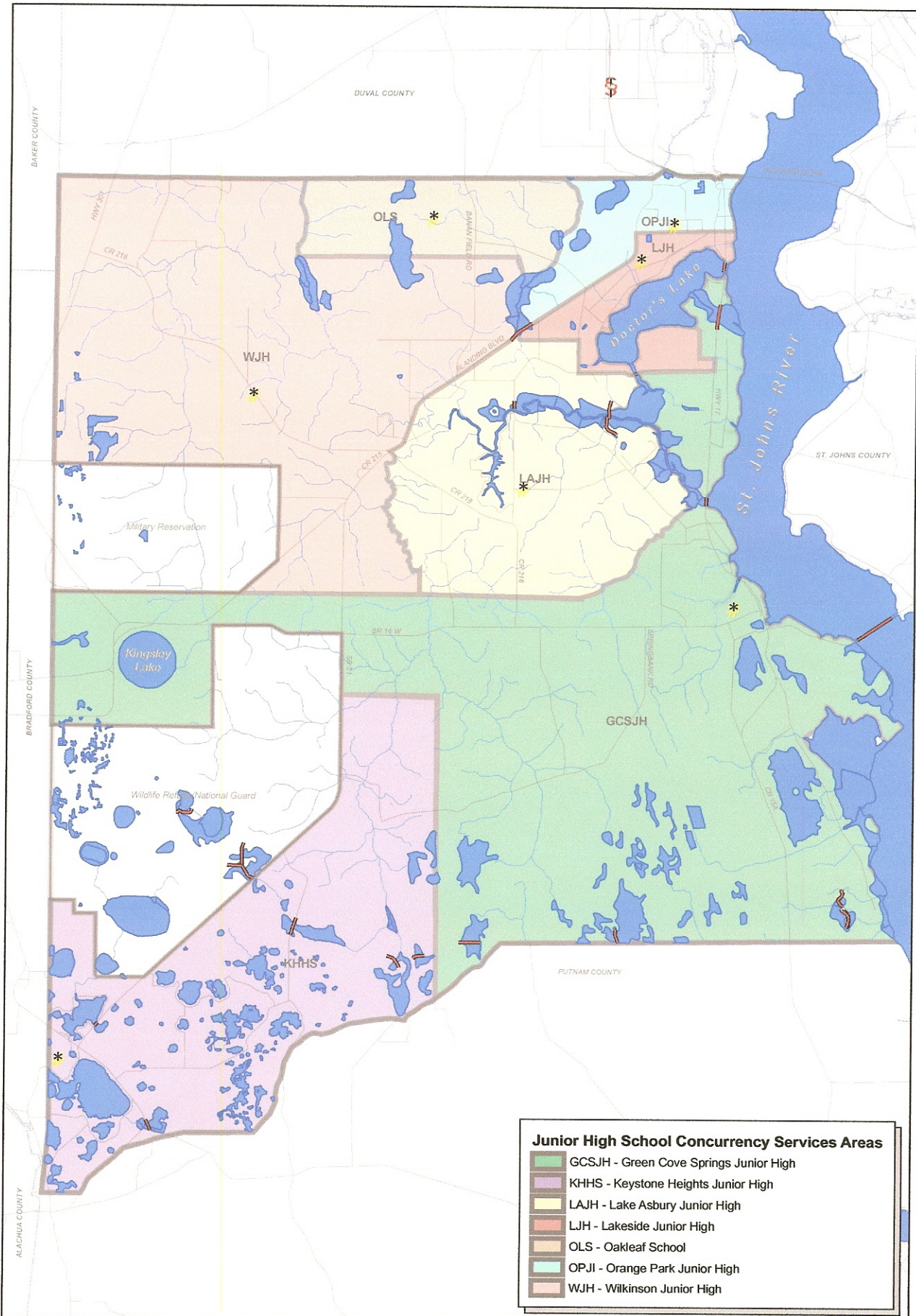
Water

FL Counties

Bridges

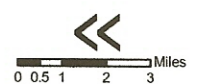
**Clay County  
Elementary Schools**





**Junior High School Concurrency Services Areas**

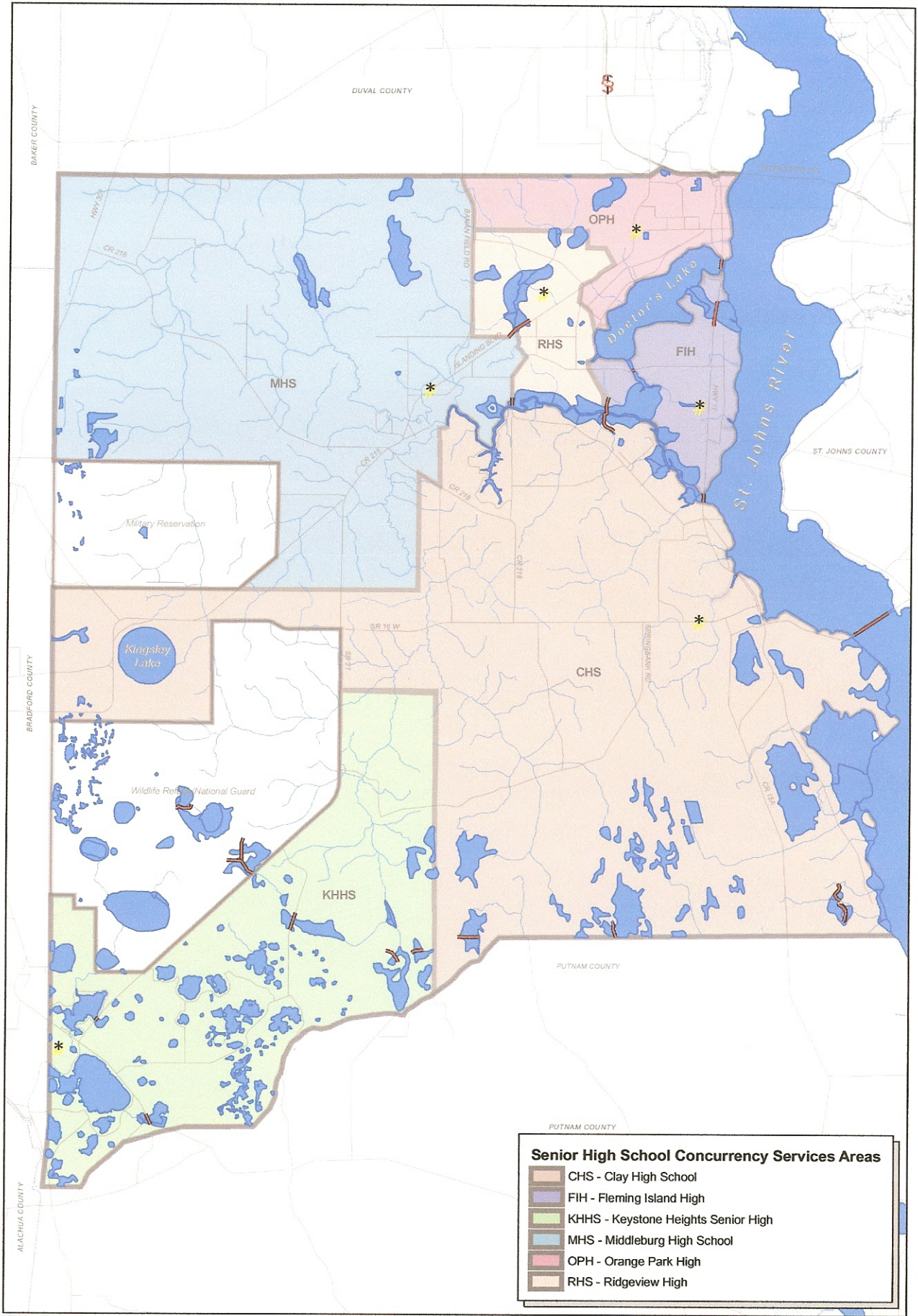
- GCSJH - Green Cove Springs Junior High
- KHHS - Keystone Heights Junior High
- LAJH - Lake Asbury Junior High
- LJVH - Lakeside Junior High
- OLS - Oakleaf School
- OPJI - Orange Park Junior High
- WJVH - Wilkinson Junior High



- Junior High School
- FL Counties
- Major Roads
- Bridges
- Water

Clay County  
Junior High Schools





**Senior High School Concurrency Services Areas**

- CHS - Clay High School
- FIH - Fleming Island High
- KHHS - Keystone Heights Senior High
- MHS - Middleburg High School
- OPH - Orange Park High
- RHS - Ridgeview High

Kimley-Horn  
and Associates, Inc.

Miles

- Senior High School
- FL Counties
- Major Roads
- Water
- Bridges

**Clay County  
Senior High Schools**